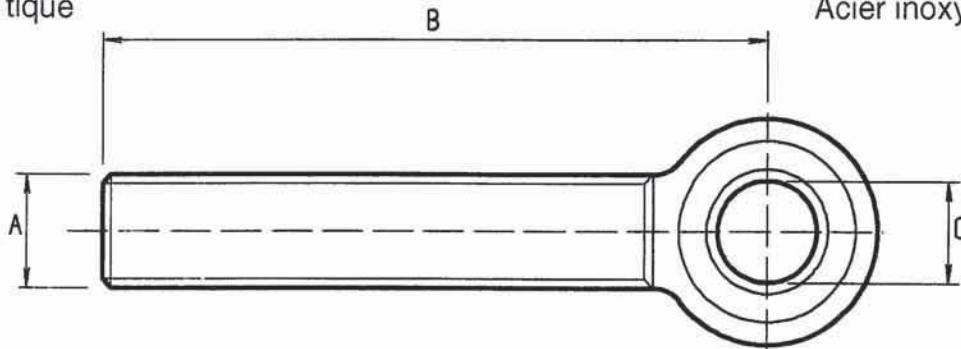




EYE BOLT - FISHERY EYE BOLT

Oogbout
Augenbolzen
Piton à tique

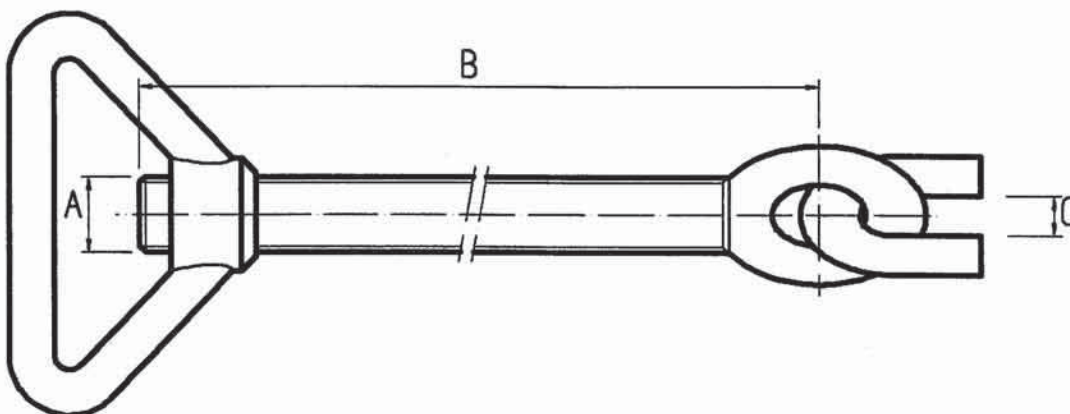
Roestvrij staal/Messing
Rostfreier stahl/Messing
Acier inoxydable/Laiton



Part nr.	A x B		C	Material
12.SS.310.20	M12	x 100mm	12mm	Stainless steel
16.SS.310.21	M16	x 80mm	18mm	Stainless steel
16.SS.310.22	M16	x 120mm	16mm	Stainless steel
16.SS.310.23	M16	x 120mm	18mm	Stainless steel
20.SS.310.25	M20	x 80mm	18mm	Stainless steel
20.SS.310.27	M20	x 130mm	18mm	Stainless steel
24.SS.310.28	M24	x 130mm	20mm	Stainless steel
12.BR.310.10	M12	x 100mm	12mm	Brass
16.BR.310.11	M16	x 80mm	18mm	Brass
16.BR.310.12	M16	x 120mm	16mm	Brass
16.BR.310.13	M16	x 120mm	18mm	Brass
20.BR.310.15	M20	x 80mm	18mm	Brass
20.BR.310.17	M20	x 130mm	18mm	Brass
24.BR.310.18	M24	x 130mm	20mm	Brass

Visserij oogbout
Fischerei Augenbolzen
Piton à tique de pêche

Roestvrij staal
Rostfreier stahl
Acier inoxydable



Part nr.	A x B		C	Material
16.SS.310.81	M16	x 150mm	25mm	Stainless steel
20.SS.310.82	M20	x 150mm	25mm	Stainless steel
16.SS.310.83	Weld-on clamp		16mm	Stainless steel

AISI 316 is equal to Werkstoff nr. 1.4408

Brass in accordance with DIN 17.673 Blatt 1.

Dimensions in accordance with DIN 80.704. Material: Cu Zu 40Pb2.